

Lecture interprétative d'antibiogrammes

Staphylocoques

E.coli

Dr Saïdani.M
28-11-2008

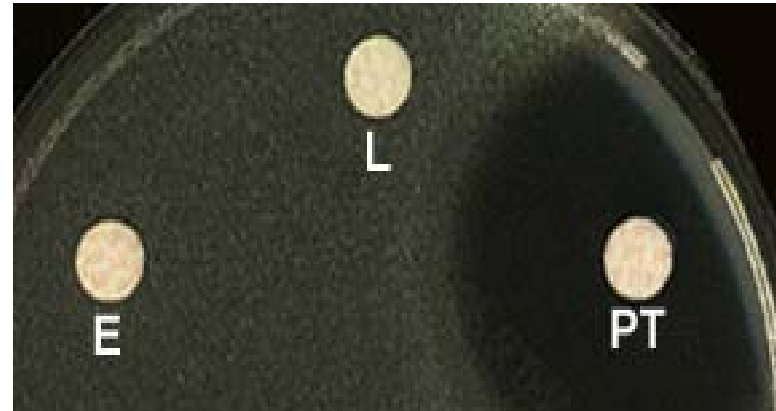


S aureus : R Gm \rightarrow R à tous les aminosides
R à K \rightarrow R à AN

Antibiogrammes de Stphylocoques



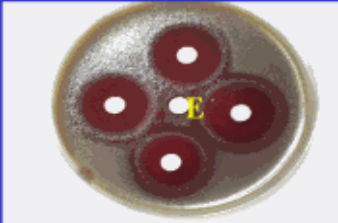
S. aureus présentant une résistance inducible à l'érythromycine



Phénotype MLSb

Erythromycin resistance by efflux in *S. pneumoniae*

Cti

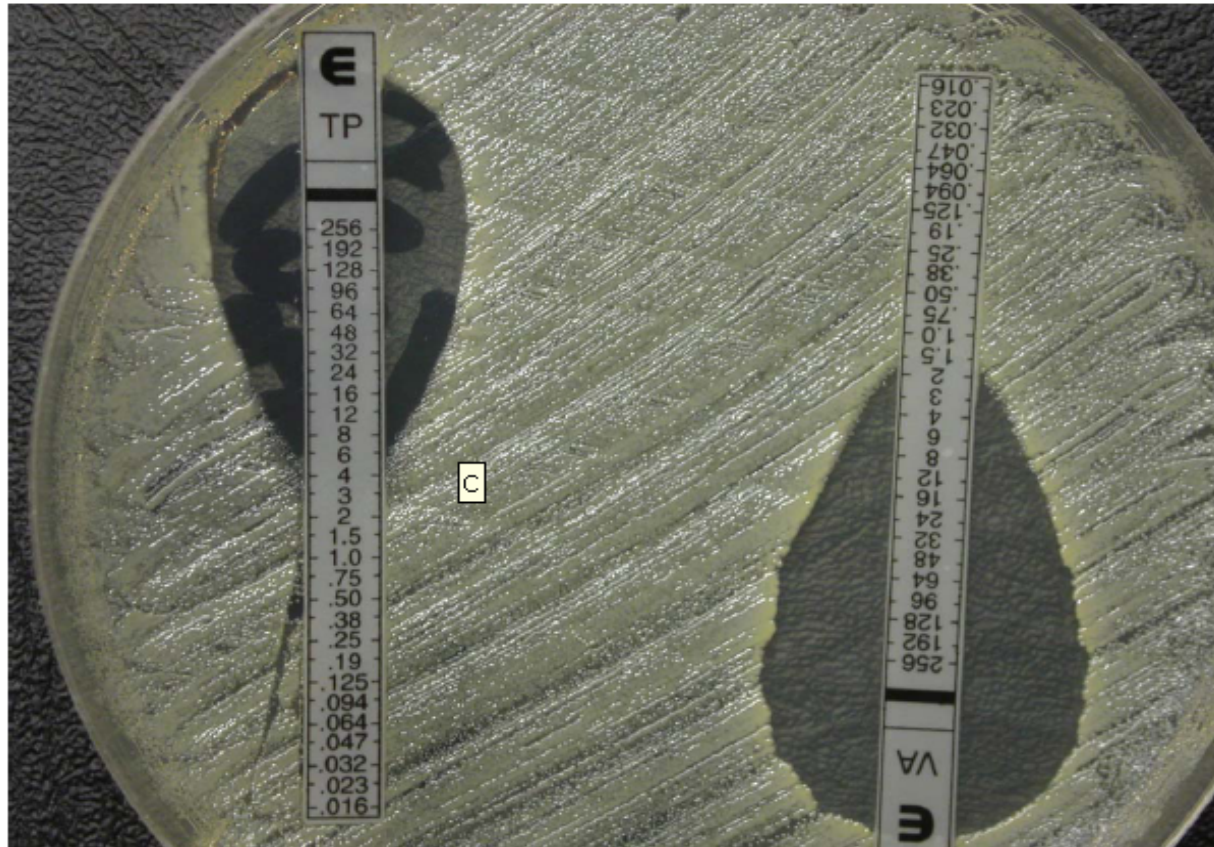


Qui

Spi


Drug efflux <i>mef(A)</i>		
14-,15-Md	16-Md	Lin
R	S	S

E-test vancomycine et teicoplanine: *S.aureus*




	S	R
TP	$\leq 4\text{mg/l}$	$>8\text{mg/l}$
VA	$\leq 4\text{mg/l}$	$>8\text{mg/l}$

Staphylococcus aureus

	LECTURE	INTERPRETATION
• Pénicilline	S	?  Toujours vérifier l'absence de la bêta-lactamase
• Oxacilline	S	S
• Amox+clav	S	S
• Céfalotine	S	S
• Imipénème	S	S
• Kanamycine	R	R
• Tobramycine	R	R
• Gentamicine	S	S
• Péfloxacine	R	R
• Ciprofloxacine	S	R

Test inutile: résistance croisée entre toutes les bêta-lactamines

ANT (4') (4'')

 **Amikacine R**

Résistance croisée

Staphylococcus aureus

	LECTURE	INTERPRETATION
• Pénicilline	R	R
• Oxacilline	R	R
• Amox+clav	R	} Test inutile: les SARM sont résistants à toutes les bêta-lactamines
• Céfalotine R	R	
• Imipénème	S	
• Kanamycine	R	
• Tobramycine	S	} APH(2'') + AAC (6')
• Gentamicine	R	
• Péfloxacine	R	
• Ciprofloxacine	S	R R Résistance croisée

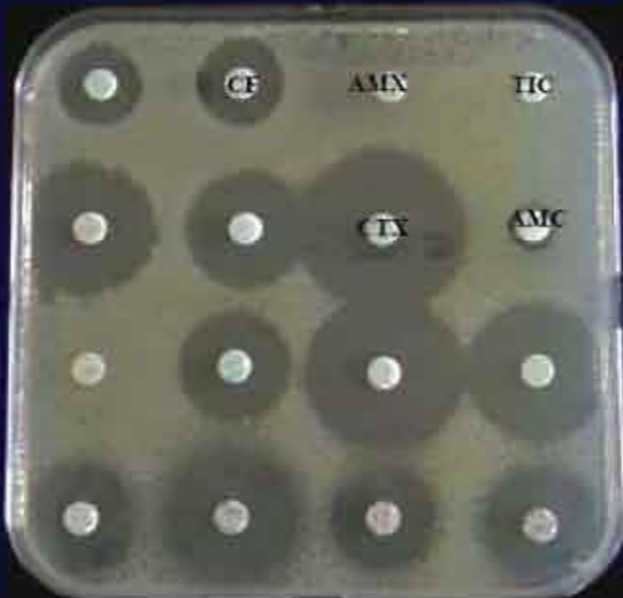
Normal



Pase



TRI



BLSE



Entérobactéries et aminosides

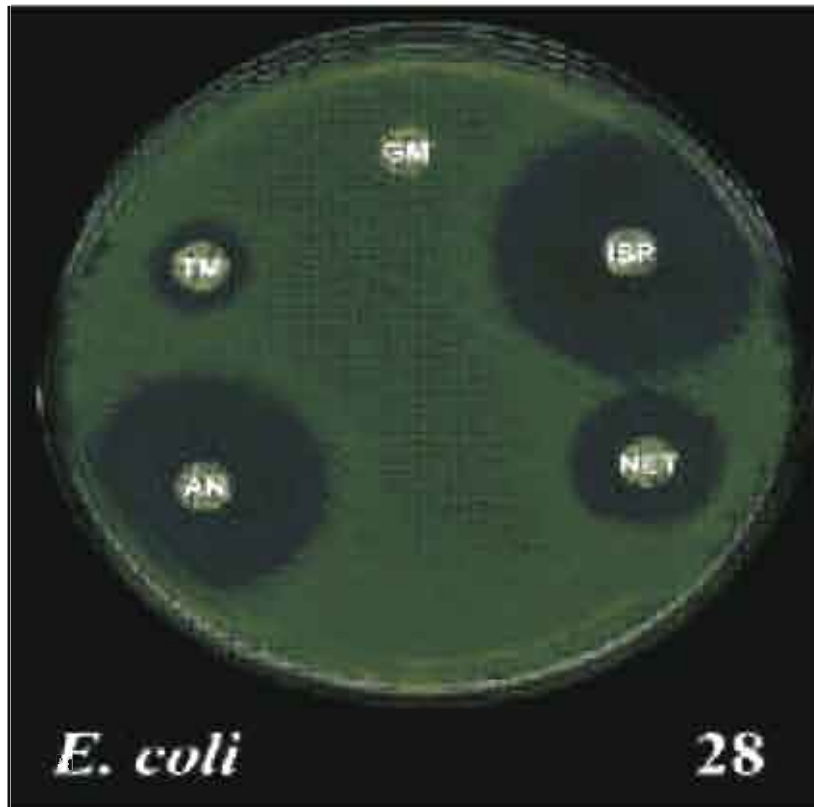
E. coli : ESBL

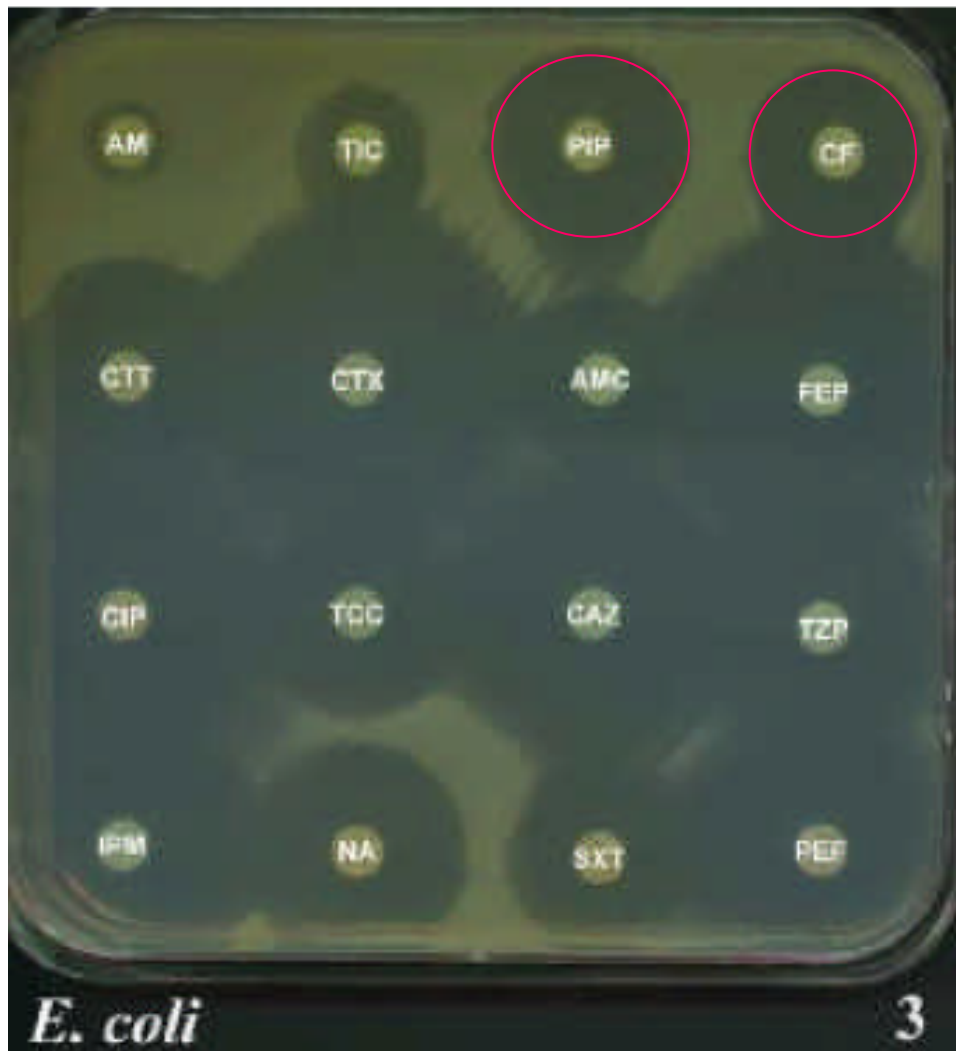
Aminoglycosides

Reading Interpretation

Gentamicin	R	R
Tobramycin	R	R
Netilmicin	R	R
Amikacin	S	I
Isepamicin	S	S

Modifying enzymes AAC(3)-II
+ AAC(6') ?

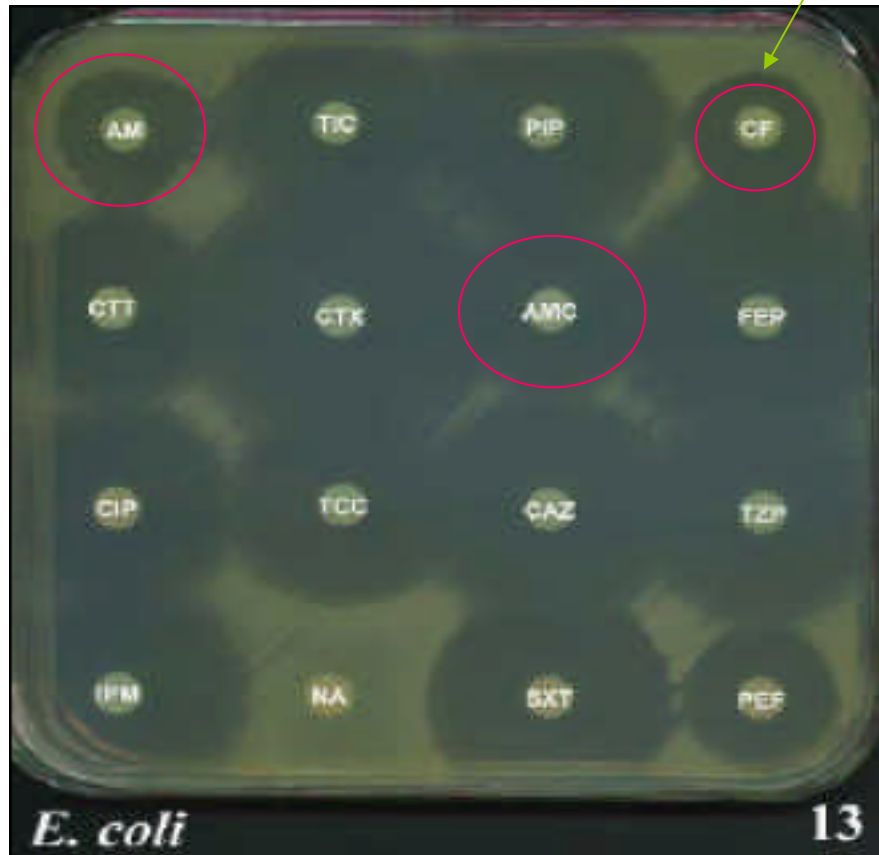




Reading Interpretation

Amoxicillin	R	R
Amoxi-clav	S	S
Ticarcillin	R	R
Ticar-clav	S	S
Piperacillin	S	I
Piper-tazo	S	S
Cefalotin	S	I
Cefotetan	S	S
Cefotaxime	S	S
Ceftazidime	S	S
Cefepime	S	S
Imipenem	S	S
Nalidixic acid	S	S
Pefloxacin	S	S
Ciprofloxacin	S	S

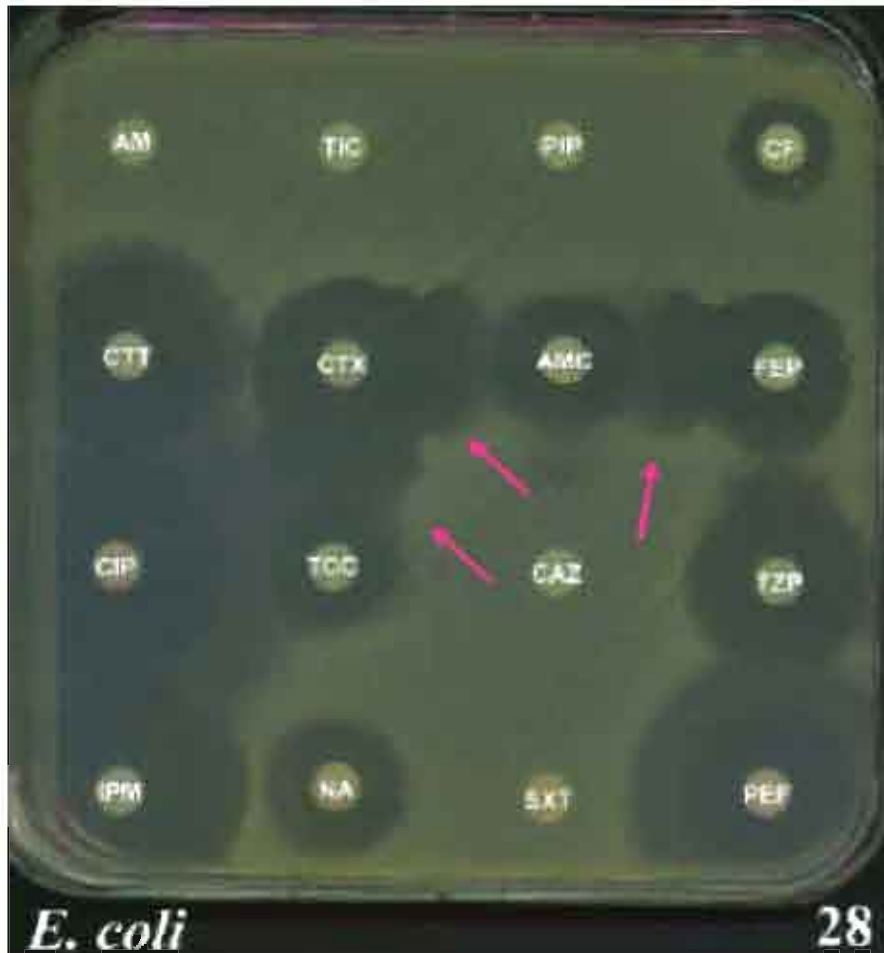
β -lactamines: pénicillinase acquise



Reading Interpretation

Amoxicillin	S	I	—
Amoxi-clav	S	I	—
Ticarcillin	S	S	
Ticar-clav	S	S	
Piperacillin	S	S	
Piper-tazo	S	S	
Cefalotin	R	R	—
Cefotetan	S	S	
Cefotaxime	S	S	
Ceftazidime	S	S	
Cefepime	S	S	
Imipenem	S	S	
Nalidixic acid	R	R	
Pefloxacin	I	I	
Ciprofloxacin	S	S	

β -lactamines: céphalosporinase de bas niveau

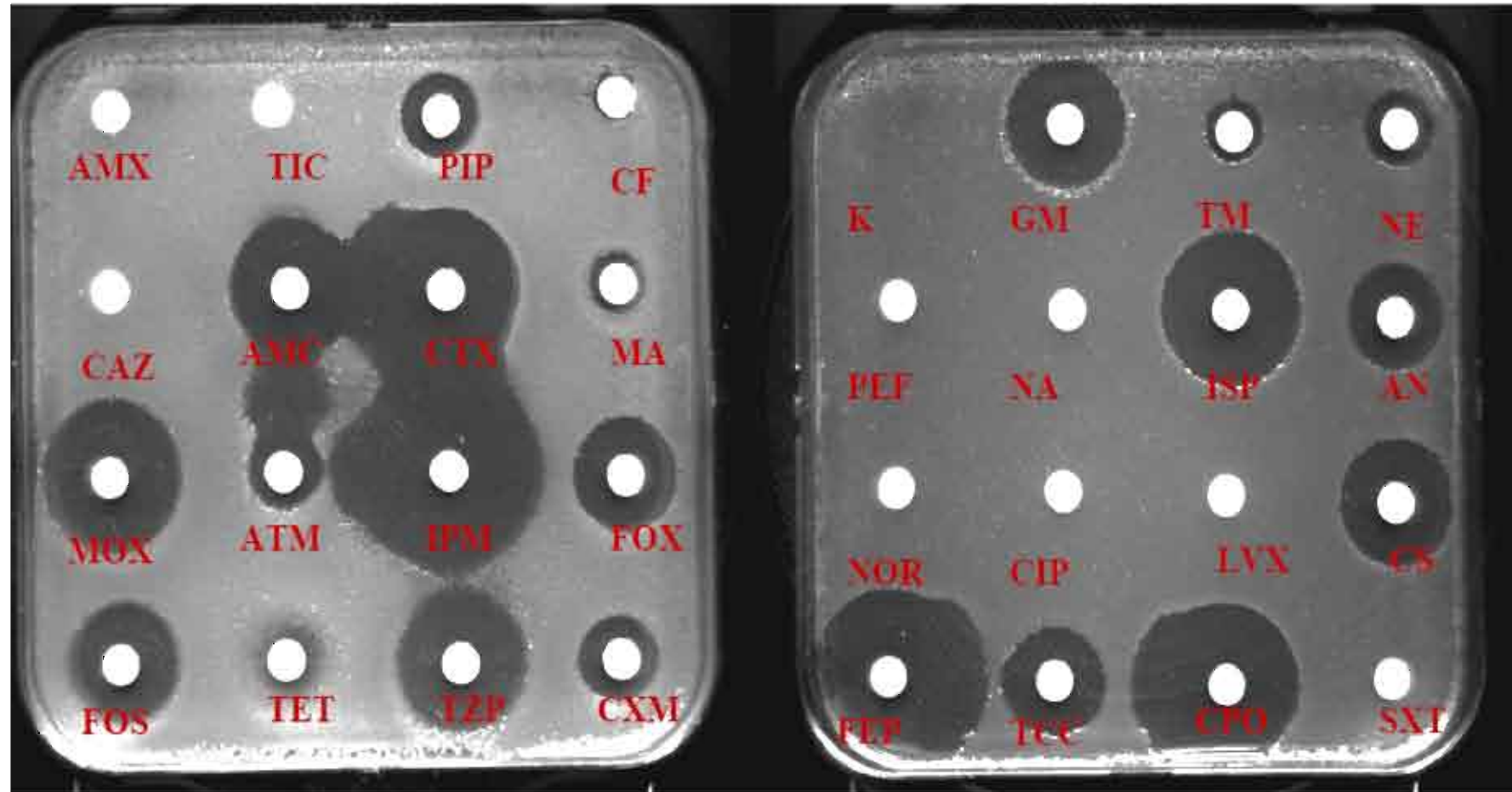


Reading Interpretation

Amoxicillin	R	R
Amoxi-clav	I	I
Ticarcillin	R	R
Ticar-clav	R	R
Piperacillin	R	R
Piper-tazo	S	I
Cefalotin	I	R
Cefotetan	S	S
Cefotaxime	S	I
Ceftazidime	R	R
Cefepime	S	I
Imipenem	S	S
Nalidixic acid	I	R
Pefloxacin	S	S
Ciprofloxacin	S	S

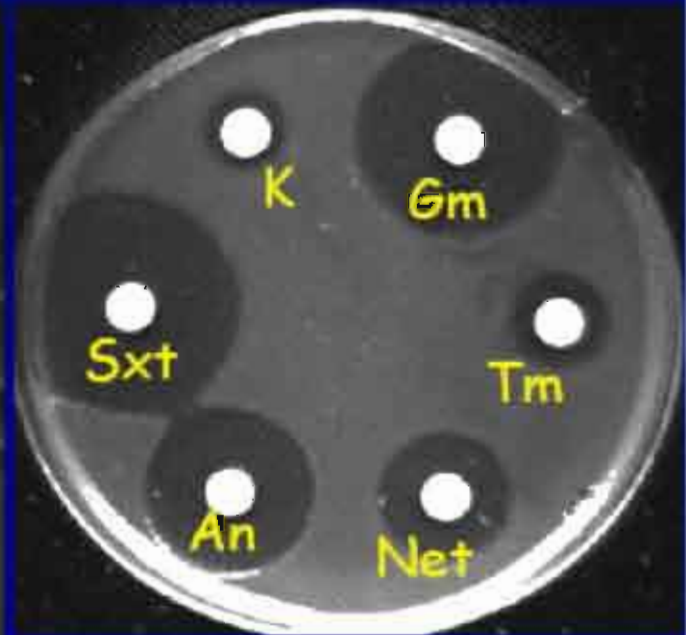
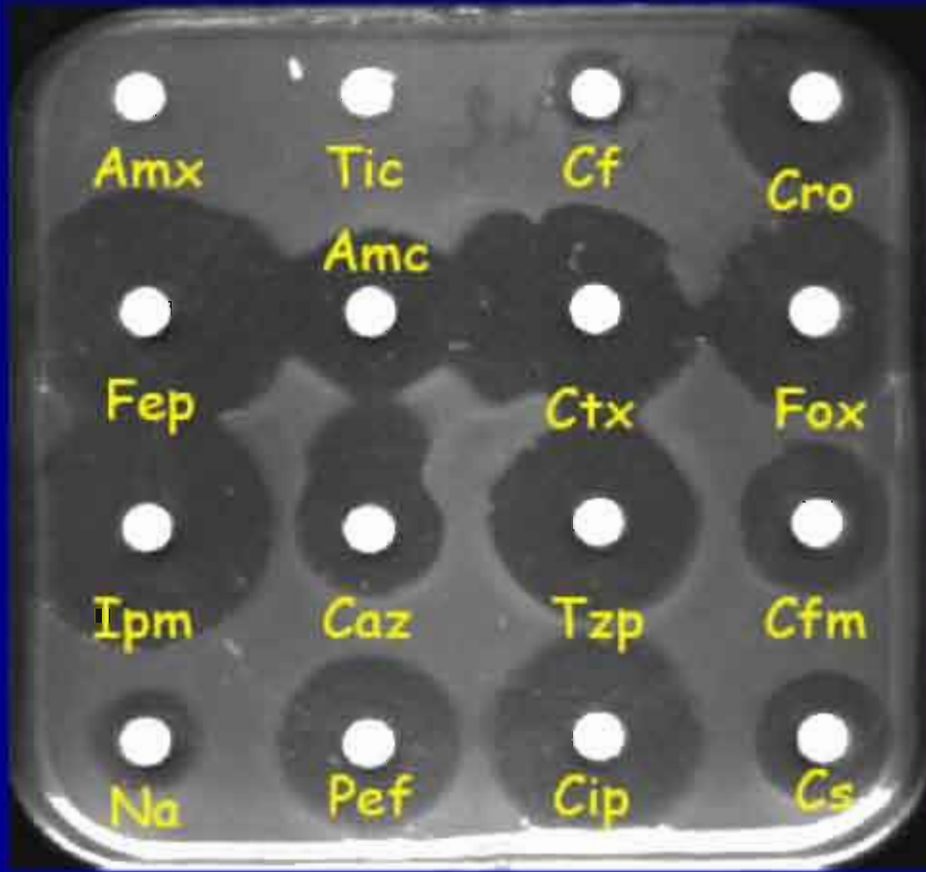
β -lactam : ESBL

E. coli BLSE





CQ2 : antibiogramme

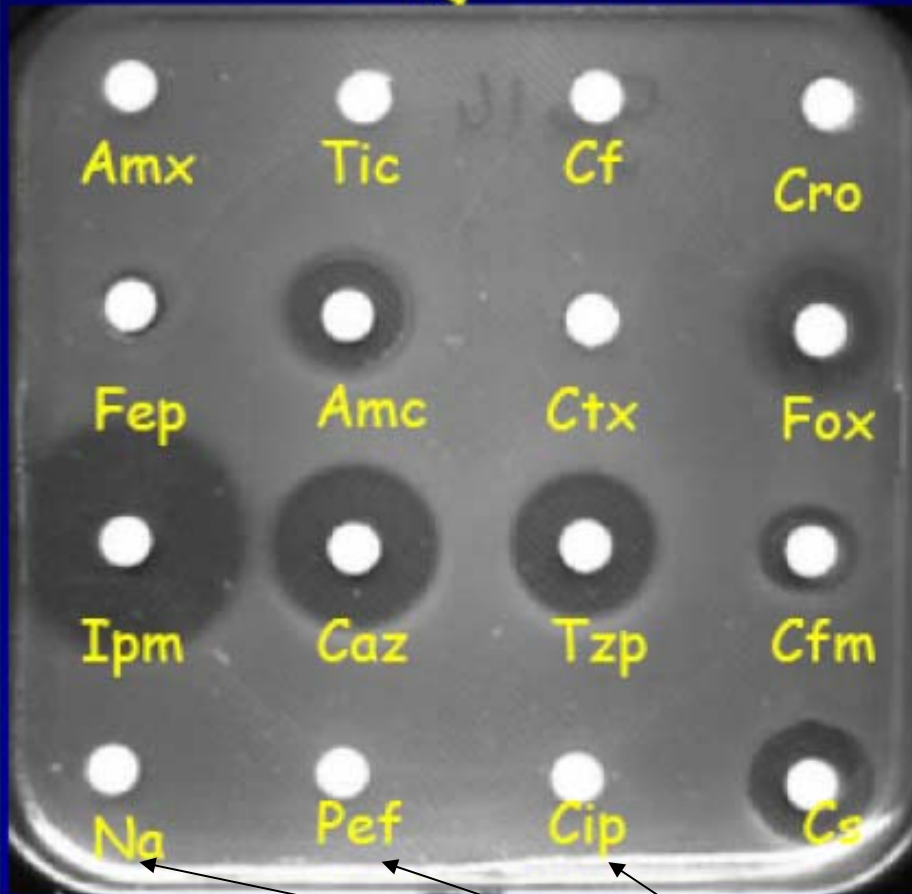


CMI (mg/l) *qnr+*
 NaI = 16 - 32
 Cip = 0,06 - 0,125₆

	Négatif		Positif
BLSE	11		89

CQ4 : antibiogramme

BLSE



MH + cloxacilline 250 mg/l

MH